



# Recur

Beauty, sustainability, comfort and cost.  
One task chair for every need.

orangebox

## Product Description

Three years in the making, Recur offers a high-performance task chair with leading sustainability credentials at great value, perfect for today's hybrid world of work.

### Function

Recur's refined curves and understated design exude a serene aesthetic that belies its capabilities as a versatile work chair suitable for a multitude of work environments. Whether it's specified for a dedicated task chair environment or used as a light-touch agile chair for a hybrid or residential setting, Recur is a chair that can do it all.

### Technical specification

A discreet self-weighting synchronous mechanism responds to the user's weight, providing just the right amount of recline resistance without the need for adjustment. It also features a travel limiter function as standard, allowing users to personalise their recline position.

Height adjustable arms are available as standard. 2-dimensional arms with sliding arm pads are also available as an option and both 1-dimensional and 2-dimensional arms can be upgraded to be width adjustable.

### Comfort

The elegant back shape and slender profile are not just an efficient use of material...its inherent flexibility and support adds dynamic comfort to an already comfortable chair.

Recur's seat cushion incorporates a dual zone seat profile with a downward-sloping front third, ensuring freedom of movement for the legs which prevents pressure on the thighs and increasing blood circulation. When required, the seat pad is also easily replaceable to prolong the life of the chair.

### Aesthetically versatile

Offering a wealth of aesthetic choices, Recur caters to both office and residential settings. The breathable back mesh is available in Graphite and Platinum as standard, with technical and coloured mesh available as options. In addition, a wide array of seat upholstery fabrics are available, as well as a black nylon or polished aluminium base for a more refined feel.

### Sustainability

Building on decades of knowledge in task seating development and sustainable design thinking, Recur has been designed to be incredibly lightweight with a high proportion of post-industrial recycled polymers. The result is a task chair with our lowest ever carbon footprint (CO<sub>2</sub>e).

Recur continues our strong belief that, where possible, we should source components from as close to our manufacturing facility as possible, with 64% of Recur parts sourced within a mile of the Orangebox factory.

### Performance

Designed to conform to EN 1335 and BS 5459, Recur's adjustability goes beyond most task chairs in its market with several additional options offering even greater ergonomic functionality.







Top – RECUR-HBA Bottom – RECUR-HBA

## Product Range

### RECUR-HB Task Chair



H1100 [H43]  
W740 [W29]  
D740 [D29]  
SH 415 - 545  
SD 420 - 480

### RECUR-HBA Task Armchair



H1100 [H43]  
W740 [W29]  
D740 [D29]  
SH 415 - 545  
SD 420 - 480

### RECUR-HBC Counter Height Chair



H 1380 [H54]  
W 710 [W28]  
D 710 [D28]  
SH 580 - 830  
SD 420 - 480

### RECUR-HBCA Counter Height Armchair



H 1380 [54]  
W 710 [W28]  
D 710 [D28]  
SH 580 - 830  
SD 420 - 480





## Product Specification

### Standard Product Description

**Castors:**

60mm Hard Black Castor as standard on HB and HBA models.

**Glides:**

Black glides as standard on HBC and HBCA models.

**Mesh Colour:**

Platinum or Graphite options available as standard.

**Back Frame:**

Black as standard. On HBA and HBCA models, the arm shroud colour will match the colour of the back frame.

**Base:**

Black nylon as standard.

**Gas Lift:**

Black as standard. 130mm stroke

**Mechanism:**

Synchronous weight balancing movement with up to 16° recline, and 3-position travel limiter as standard.

**Seat:**

Black as standard. Integrated depth control. 60mm seat depth adjustment.

**Seat Cushion:**

Combustion modified high resilient (CMHR) moulded foam. Seamless cover for fabric upholstery and panelled cover for leather or vinyl.

**Arms:**

Height Adjustable Arms as standard (HBA, HBCA). Black TPU, soft touch armpad with 80mm of height adjustment.

### Optional Upcharges

**Castors:**

65mm Soft Black Castors available as an upcharge.

**Glides:**

70mm Black Glides available as an upcharge.

**Mesh Colour:**

Technical mesh available as an upcharge.

**Back Frame:**

Light grey available as an upcharge. On HBA and HBCA models, the arm shroud colour will match the colour of the back frame.

**Base:**

Polished Aluminium Base available as an upcharge.

**Lumbar:**

Height adjustable Lumbar Support. Black, plastic pad with 70mm of height adjustment.

**Arms:**

Sliding armpads optional extra (60mm of rearward slide). All arm options can be equipped with width adjustability (70mm)

**Knock Down Version:**

Available as an upcharge.

### Product Certification

**Intertek Sustainability Clean Air Product Certification**

Clean Air certification provides proof that products have been independently tested and found to conform to VOC standards and to the ANSI/ BIFMA Furniture Emissions Standards. All Orangebox products\* have achieved Gold certification, excluding laminate products which achieve a Silver certification.

\*With the exception of Fielding Tables.

**BS EN 1335-1: 2020**

Office furniture. Office work chair. Dimensions. Determination of dimensions.

**BS EN 1335-2: 2018**

Office furniture. Office work chair. Safety requirements.

**BS 5459-2:2000+A2:2008**

Structurally suitable and sufficiently stable for use as an office work chair.



## Operating Instructions



### Seat Height

The seat height control lever can be found on the stalk beneath the seat on the right-hand side. To adjust seat height, pull the lever up and either press your weight down or slightly lift up from the seat. Release the lever to set the seat at the desired height.

**To help keep your pelvis upright and your spine aligned in a natural 'S' shape, thigh to torso angle should be 90° or slightly more.**



### Seat Depth

The seat depth control can be found just under the seat on the left-hand side. To adjust seat depth, pull the control outwards whilst your weight is lifted off the seat and slide the seat forward or backward into the desired position.

**To ensure adequate thigh support without obstructing leg movement, up to three fingers gap should be left between the front of the seat and the back of your knees.**



### Travel Limiter

The travel limiter control can be found on the end of the control stalk beneath the seat on the right-hand side. When sat in the chair, rotate the control fully forward to lock the chair in the upright position. Rotate the control rearward through three 'click' positions to adjust the chair's recline movement to one of three limited angles.

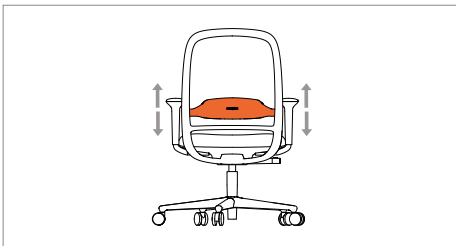
**Keeping the chair unlocked most of the time will allow you to make full use of the chair movement, improving blood circulation.**



### Arm Height Adjustment

The arm height adjustment button can be found underneath the front of the armpad. To adjust the height, press the button and lift or lower the arm to the desired position. Release the button to lock the arm into position.

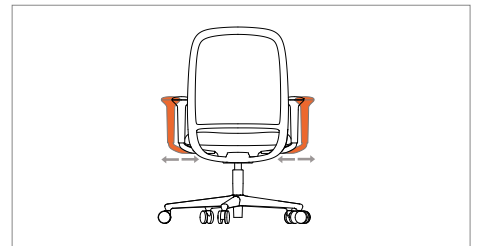
**The armrests should touch your forearms when your shoulders and elbows are relaxed at your side. This will avoid strain in the neck and upper limbs.**



### Lumbar Adjustment (option)

To adjust the height of the lumbar, simply reach around the back of the chair with both hands and lift or lower the pad to the desired position.

**To help maintain the natural 'S' shape of the spine, the lumbar pad should support the small of your back.**



### Arm Width Adjustment (option)

The width adjustment knob can be found on the underside of each arm where it connects to the seat. Reach underneath the seat and loosen the knob by one full turn. Then slide the arm inward or outward to the desired position and re-tighten the knob to clamp the arm firmly in place.

**To help give you full forearm support, get a comfortable distance from the front edge of the desk and allow for greater unrestricted movement.**



### Armpad Depth (option)

You can fine-tune the front to back position of the armpads by simply pushing them forwards or backwards to the desired position. They can be pushed all the way back to enable you to get closer to your work surface.

**To cater for a more supportive armrest to suit your body frame.**

## Product Finishes

### Glides



Black

### Castors



Black

### Base



Black



Polished Aluminium

### Back Frame



Black



Light Grey

### Lumbar

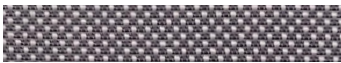


Black



Light Grey

### Mesh



Platinum

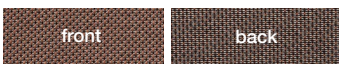


Graphite

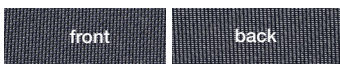


Black Technical

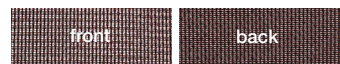
### Coloured Mesh



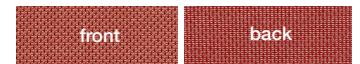
Chocolate



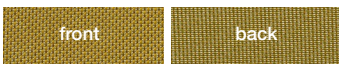
Midnight



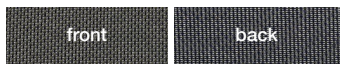
Claret



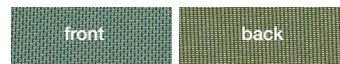
Terracotta



Chartreuse



Pine



Verdigris



Stone

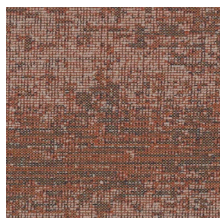
## Curated Seat Fabrics

We have paired 5 fabrics per mesh colours that perfectly complement the palette.

### Mesh Colour



**Chocolate**



Kvadrat  
Memory 2 - 236



Kvadrat  
Hero Heather - 373



Kvadrat  
Remix 3 - 346



Camira  
X2 - Formula



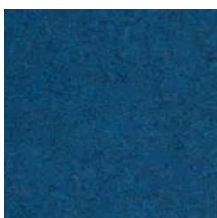
Kvadrat  
Revive - 454



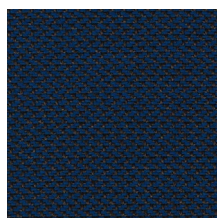
**Midnight**



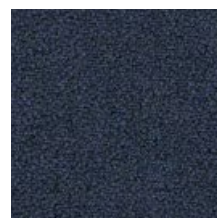
Kvadrat  
Hero Heather - 773



Camira  
Blazer - Newcastle



Kvadrat  
Revive - 774



Camira  
X2 - Acute



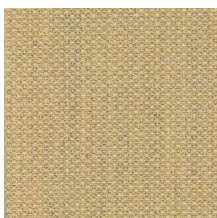
Camira  
Xtreme - Costa



**Chartreuse**



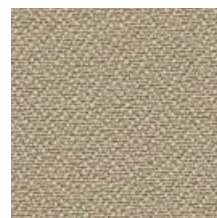
Kvadrat  
Melange Nap - 411



Kvadrat  
Fiord 2 - 422



Kvadrat  
Hero Heather - 423



Camira  
Xtreme - Aruba



Camira  
Xtreme - Appledore



**Pine**



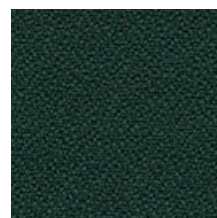
Kvadrat  
Hero Heather - 973



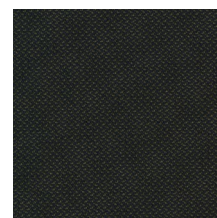
Kvadrat  
Hero Heather - 973



Kvadrat  
Fiord 2 - 981



Camira  
Xtreme - Taboo


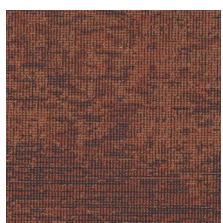
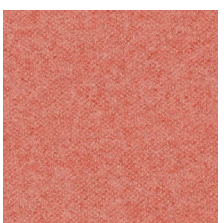
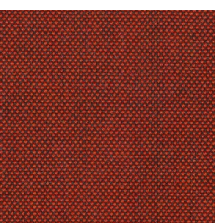

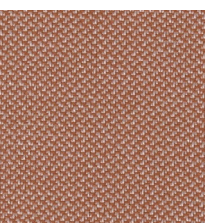








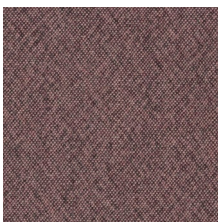
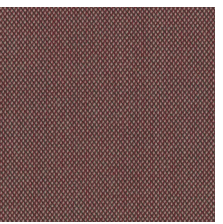




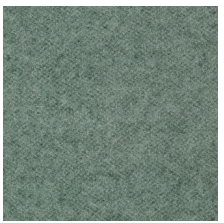

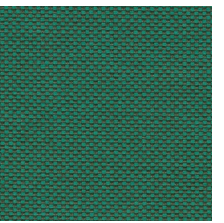
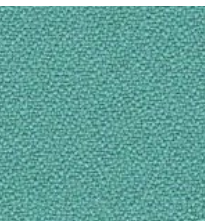


Kvadrat  
Revive - 971

## CURATED SEAT FABRICS

We have paired 5 fabrics per mesh colours that perfectly complement the palette.

### Mesh Colour

					
<p><b>Terracotta</b></p>	<p>Kvadrat Memory 2 - 256</p>	<p>Kvadrat Hero Heather - 533</p>	<p>Kvadrat Remix 3 - 566</p>	<p>Camira X2 -Divide</p>	<p>Kvadrat Revive - 414</p>
					
<p><b>Stone</b></p>	<p>Kvadrat Memory 2 - 223</p>	<p>Kvadrat Melange Nap - 221</p>	<p>Kvadrat Fiord 2 - 322</p>	<p>Camira MLF - Bank</p>	<p>Kvadrat Revive - 324</p>
					
<p><b>Claret</b></p>	<p>Kvadrat Fiord 2 - 591</p>	<p>Kvadrat Melange Nap - 651</p>	<p>Kvadrat Steelcut Trio - 645</p>	<p>Camira MLF - Northfields</p>	<p>Camira X2 - Add</p>
					
<p><b>Verdigris</b></p>	<p>Camira MLF - Farringdon</p>	<p>Kvadrat Hero Heather - 933</p>	<p>Kvadrat Memory 2 - 953</p>	<p>Kvadrat Field 2 - 963</p>	<p>Camira Xtreme - Campeche</p>